

**REDLAND CITY COUNCIL**  
**Roads (Amendment) Subordinate Local Law (No. 1) 2011**

Contents

---

**Part 1 Preliminary..... 1**

- 1 Short title ..... 1
- 2 Subordinate local law amended ..... 1

**Part 2 Amendments to subordinate local law..... 1**

- 3 Amendment of title..... 1
- 4 Amendment of explanatory note ..... 1
- 5 Amendment of s1 (Citation) ..... 1
- 6 Amendment of s2 (Objects) ..... 1
- 7 Insertion of new s2A (Local Law – Section 3)..... 1
- 8 Amendment of s4 (Local Law – Section 17) ..... 2
- 9 Amendment of s6 (Local Law – Section 20) ..... 2
- 10 Amendment of s9 (Local Law – Section 31(3)) ..... 2
- 11 Insertion of new sch 1 (Off-street regulated parking areas)..... 2

## **Part 1 Preliminary**

### **1 Short title**

This local law may be cited as *Redland City Council Roads (Amendment) Subordinate Local Law (No. 1) 2011*.

### **2 Subordinate local law amended**

This subordinate local law amends *Subordinate Local Law No. 21 (Roads)* of Redland City Council.

## **Part 2 Amendments to subordinate local law**

### **3 Amendment of title**

Title—

*omit, insert—*

**‘REDLAND CITY COUNCIL**

**Subordinate Local Law No. 21 (Roads)’.**

### **4 Amendment of explanatory note**

Explanatory note ‘Local Law Policy’—

*omit, insert—*

‘Subordinate Local Law’.

### **5 Amendment of s1 (Citation)**

(1) Section 1, ‘local law policy’—

*omit, insert—*

‘subordinate local law’.

(2) Section 1, ‘Local Law Policy’—

*omit, insert—*

‘Subordinate Local Law’.

### **6 Amendment of s2 (Objects)**

Section 2, ‘local law policy’—

*omit, insert—*

‘subordinate local law’.

### **7 Insertion of new s2A (Local Law – Section 3)**

After section 2—

*insert—*

**‘2A Local Law - Section 3**

For the purposes of Section 3 of the Local Law:

- (a) each area of land specified in schedule 1 is declared to be an off-street regulated parking area; and
- (b) schedule 1, part 1 identifies car parks and other areas which are declared to be an off-street regulated parking area; and
- (c) if an off-street regulated parking area is identified on a map in schedule 1, part 2—
  - (i) the area indicated by hatching on the map is declared to be an off-street regulated parking area; and
  - (ii) the boundaries of the off-street regulated parking area are indicated by a bold line circumscribing the hatched area on the map.

**8 Amendment of s4 (Local Law – Section 17)**

- (1) Section 4(b), ‘Main Roads Department’—

*omit, insert—*

‘Department of Transport and Main Roads’.

- (2) Section 4(f), ‘Shire’—

*omit.*

**9 Amendment of s6 (Local Law – Section 20)**

- (1) Section 6(a), ‘Main Roads Department’—

*omit, insert—*

‘Department of Transport and Main Roads’.

- (2) Section 6(d), ‘Shire’—

*omit.*

**10 Amendment of s9 (Local Law – Section 31(3))**

Section 9, ‘Local Law Policy’—

*omit, insert—*

‘Subordinate Local Law’.

**11 Insertion of new sch 1 (Off-street regulated parking areas)**

After section 9—

*insert—*

**‘Schedule 1 Off-street regulated parking areas**

## **Part 1**

### **Car parks and other areas which are declared to be an off-street regulated parking area.**

#### **1. Capalaba**

<b>Description of car park or area</b>	<b>Location or address of car park or area</b>
Dollery Road off-street car park as identified in schedule 1, part 2, map 1	Between Faccio Lane and Noeleen Street, Capalaba

#### **2. Cleveland**

<b>Description of car park or area</b>	<b>Location or address of car park or area</b>
Doig Street off-street car park (E) as identified in schedule 1, part 2, map 2	Between Middle Street and Queen Street, Cleveland
Doig Street off-street car park (W) as identified in schedule 1, part 2, map 2	Between Queen Street and Middle Street, Cleveland
Iluka Arcade off-street car park as identified in schedule 1, part 2, map 2	Doig Street, Cleveland
John Street off-street car park as identified in schedule 1, part 2, map 3	Between Queen Street and Russell Street, Cleveland
Queen Street off-street car park (N) as identified in schedule 1, part 2, map 4	Between Wynyard Street and Waters Street, Cleveland
Queen Street off-street car park (S) as identified in schedule 1, part 2, map 4	Between Queen Street and Waters Street, Cleveland
Shore Street West off-street car park as identified in schedule 1, part 2, map 5	Between Shore Street West and Kyling Lane, Cleveland
Toondah Harbour off-street car park as identified in schedule 1, part 2, map 6	Emmett Drive, Cleveland
Waterloo Street off-street car park as identified in schedule 1, part 2, map 2	Between Middle Street and Queen Street, Cleveland
Wynyard Street off-street car park as identified in schedule 1, part 2, map 4	Between Middle Street and Queen Street, Cleveland

#### **3. Macleay Island**

<b>Description of car park or area</b>	<b>Location or address of car park or area</b>
Macleay Island Ferry Terminal car and boat trailer park as identified in schedule 1, part 2, map 7	Brighton Road and Russell Terrace, Macleay Island

#### **4. North Stradbroke Island**

<b>Description of car park or area</b>	<b>Location or address of car park or area</b>
One Mile Ferry Terminal car park as identified in schedule 1, part 2, map 8	Yabby Street, One Mile, Dunwich, North Stradbroke Island

## 5. Redland Bay

<b>Description of car park or area</b>	<b>Location or address of car park or area</b>
Weinam Creek Cenotaph off-street car park as identified in schedule 1, part 2, map 9	Banana Street, Redland Bay
Weinam Creek off-street car and boat trailer park as identified in schedule 1, part 2, map 9	Banana Street, Redland Bay
Weinam Creek Overflow car park as identified in schedule 1, part 2, map 10	Meissner Street, Redland Bay
Weinam Creek vehicle barge off-street car park as identified in schedule 1, part 2, map 11	Weinam Street and Esplanade, Redland Bay

## 6. Russell Island

<b>Description of car park or area</b>	<b>Location or address of car park or area</b>
Russell Island Ferry Terminal car and boat trailer park as identified in schedule 1, part 2, map 12	Alison Crescent, Hawthornden Drive and High Street, Russell Island
Russell Island off-street car park as identified in schedule 1, part 2, map 12	Bayview Road, Russell Island

## 7. Victoria Point

<b>Description of car park or area</b>	<b>Location or address of car park or area</b>
Victoria Point off-street car and boat trailer park as identified in schedule 1, part 2, map 13	Masters Avenue, Victoria Point
Victoria Point shops off-street car park as identified in schedule 1, part 2, map 14	Bunker Road and Cleveland – Redland Bay Road, Victoria Point

## 8. Wellington Point

<b>Description of car park or area</b>	<b>Location or address of car park or area</b>
Wellington Point off-street car and boat trailer park as identified in schedule 1, part 2, map 15	Main Road, Wellington Point

**Part 2**

**Maps of off-street regulated parking areas**

**Map 1**



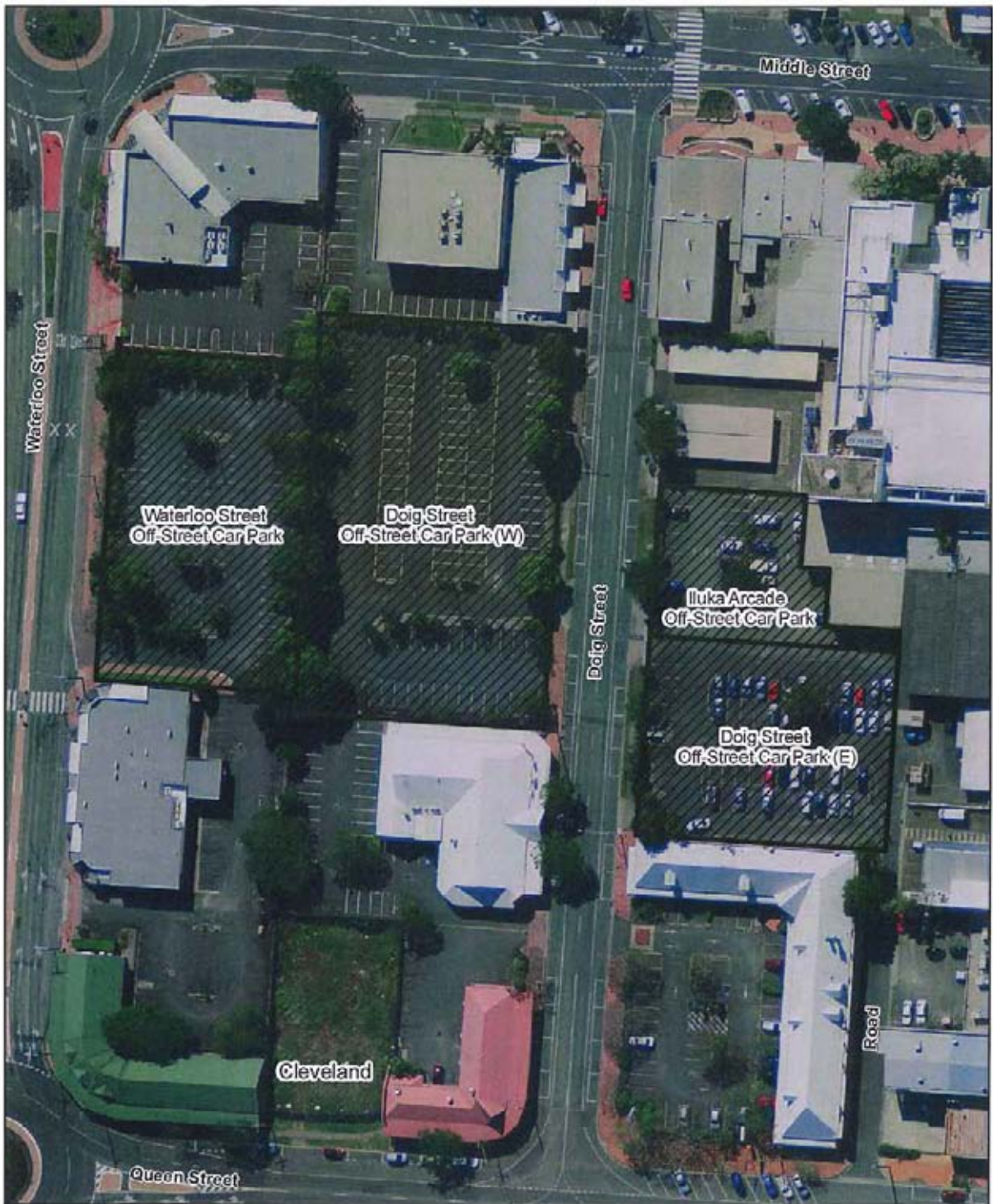
**Dollery Road Off-Street Car Park**

**Legend**  
[Hatched Box] Off-Street Regulated Parking Area

1:1,000

  
0 7.5 15 30  
Meters

### Map 2



**Waterloo Street Off-Street Car Park**  
**Doig Street Off-Street Car Park (W)**  
**Iluka Arcade Off-Street Car Park**  
**Doig Street Off-Street Car Park (E)**

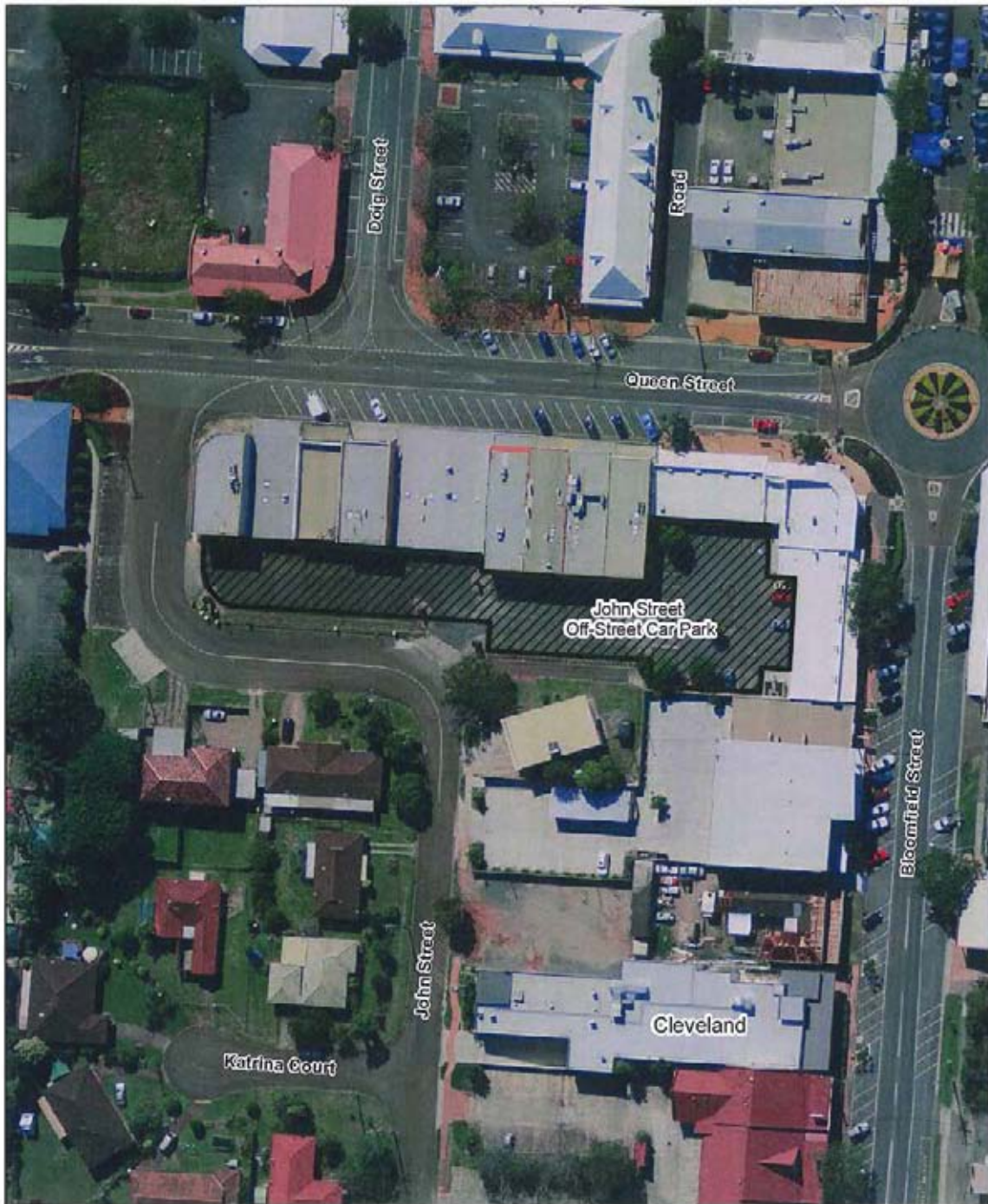
**Legend**  
Off-Street Regulated Parking Area



0 7.5 15 30  
Meters

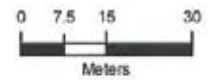
1:1,000

### Map 3



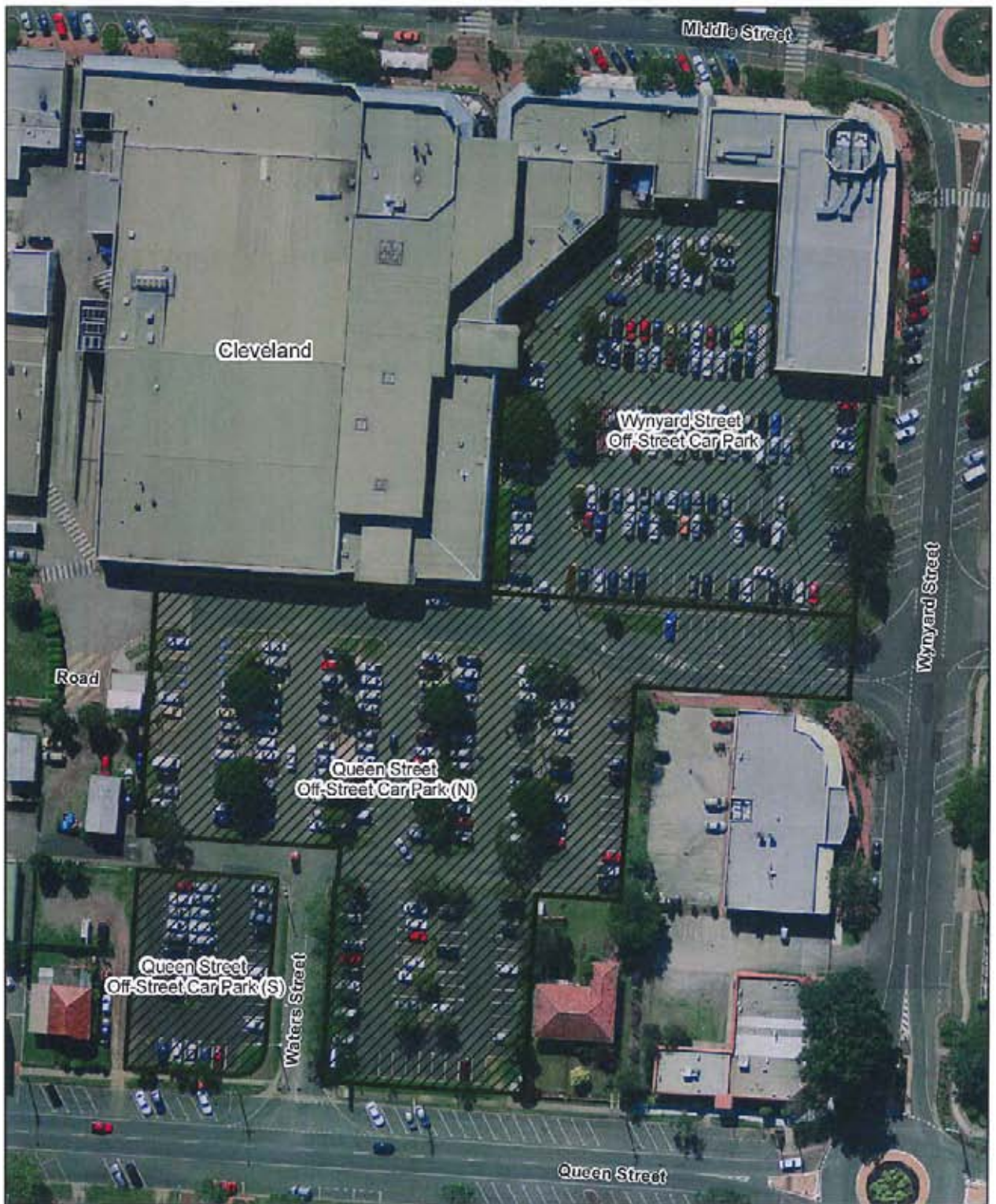
#### John Street Off-Street Car Park

**Legend**  
[Diagonal lines symbol] Off-Street Regulated Parking Area



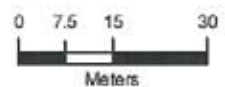
1:1,000

### Map 4



Wynyard Street Off-Street Car Park  
Queen Street Off-Street Car Park (N)  
Queen Street Off-Street Car Park (S)

Legend  
[Hatched Box] Off-Street Regulated Parking Area



1:1,000

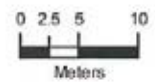
### Map 5



#### Shore Street West Off-Street Car Park

**Legend**  
[Diagonal hatched box] Off-Street Regulated Parking Area

1:500

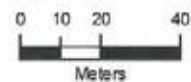


### Map 6



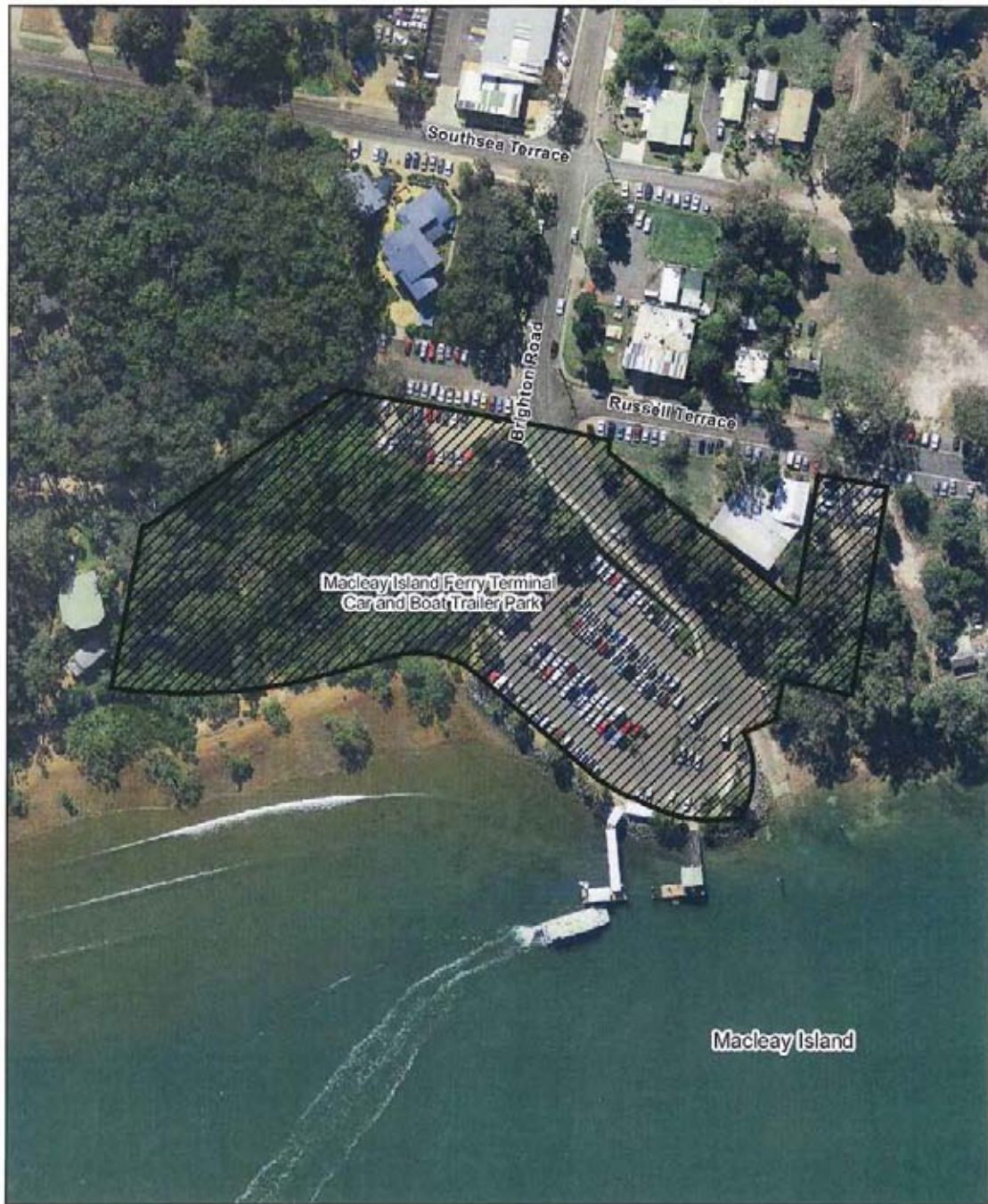
#### Toondah Harbour Off-Street Car Park

Legend  
Off-Street Regulated Parking Area



1:1,500

**Map 7**



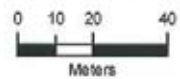
**Macleay Island Ferry Terminal Car and Boat Trailer Park**



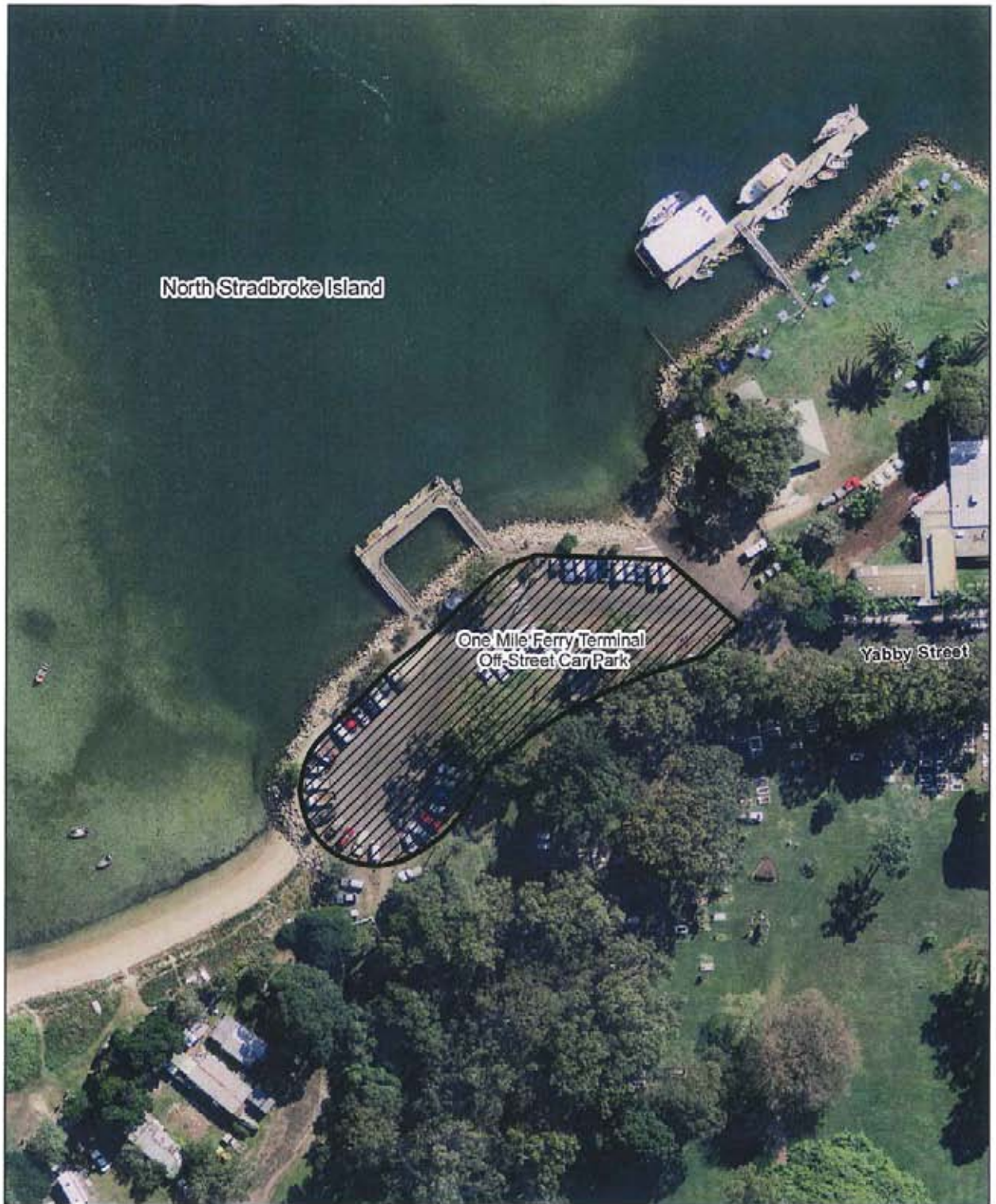
**Legend**

 Off-Street Regulated Parking Area

1:1,500



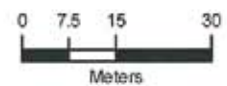
**Map 8**



**One Mile Ferry Terminal Off-Street Car Park**

**Legend**

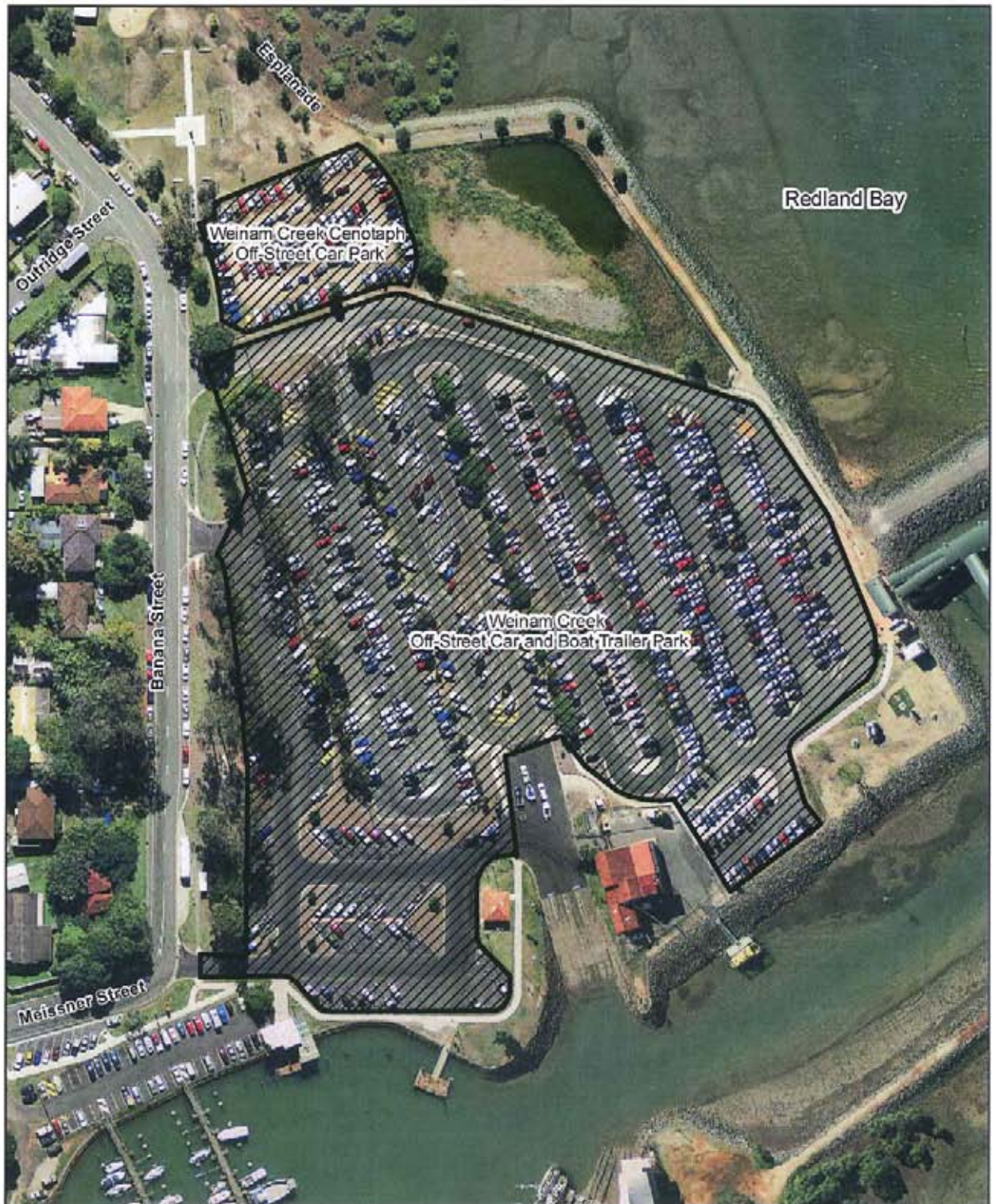
 Off-Street Regulated Parking Area



1:1,000



Map 9



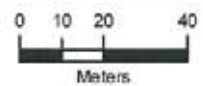
Weinam Creek Cenotaph Off-Street Car Park  
Weinam Creek Off-Street Car and Boat Trailer Park



Legend

 Off-Street Regulated Parking Area

1:1,500



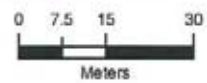


Map 10



Weinam Creek Overflow Off-Street Car Park

Legend  
[Hatched Box] Off-Street Regulated Parking Area



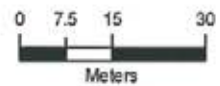
1:1,000

Map 11



Weinam Creek Vehicle Barge Off-Street Car Park

Legend  
Off-Street Regulated Parking Area



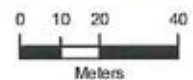
1:1,000

Map 12



**Russell Island Off-Street Car Park**  
**Russell Island Ferry Terminal Off-Street Car and Boat Trailer Park**

Legend  
Off-Street Regulated Parking Area



1:1,500

**Map 13**

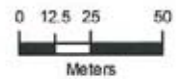


**Victoria Point Off-Street Car and Boat Trailer Park**

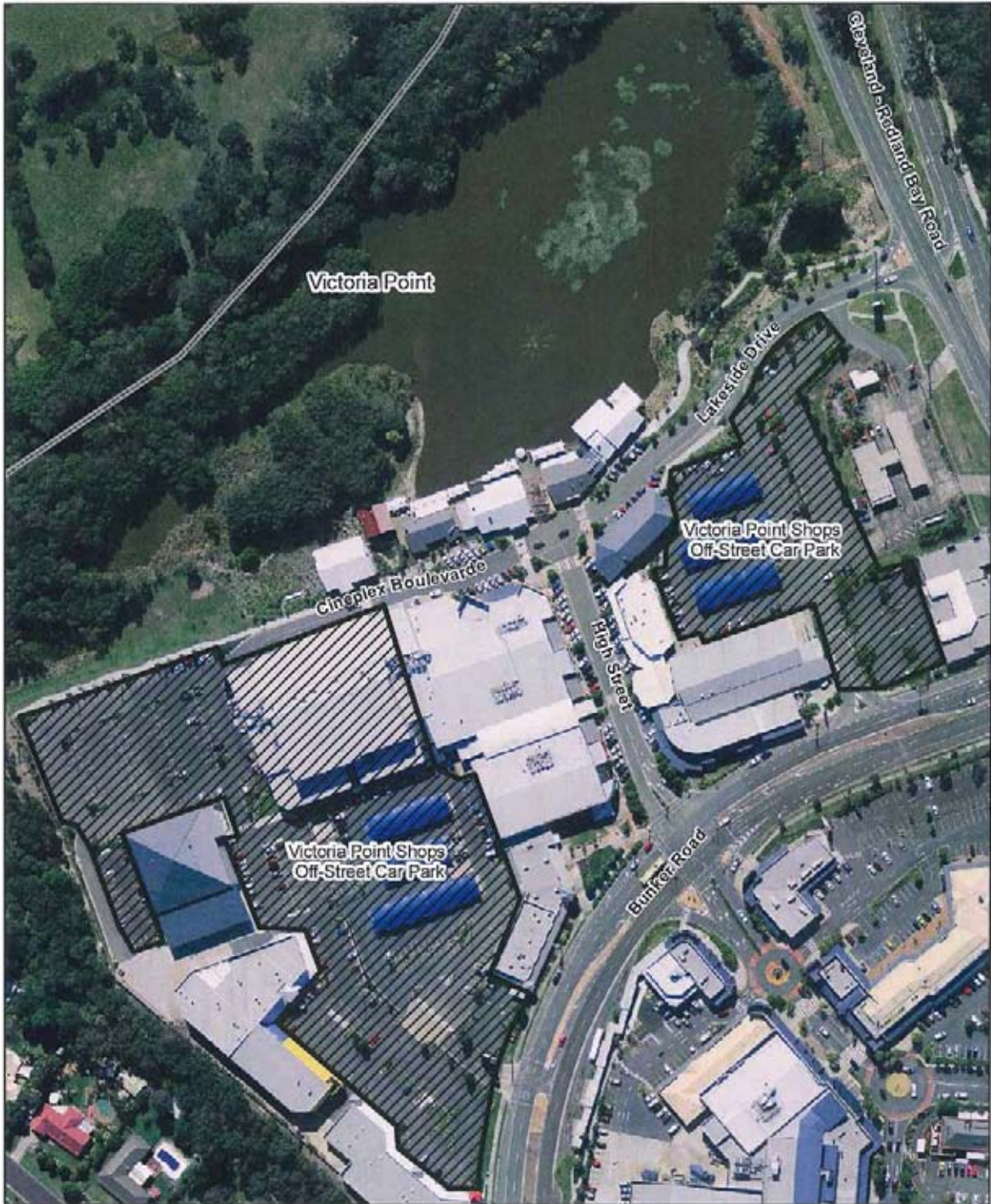


**Legend**  
[Hatched Box] Off-Street Regulated Parking Area

1:2,000

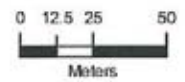


Map 14



Victoria Point Shops Off-Street Car Park

Legend  
Off-Street Regulated Parking Area



1:2,000

Map 15



Wellington Point Off-Street Car and Boat Trailer Park



Legend  
Off-Street Regulated Parking Area

1:2,000

